



Lindsborg Old Mill
& Swedish Heritage Museum

MILLFEST²⁰²⁴



New in 2024:
\$5 for Axe
Throwing!
Details Inside!



Saturday, May 4, 2024

9 a.m. - 5 p.m.

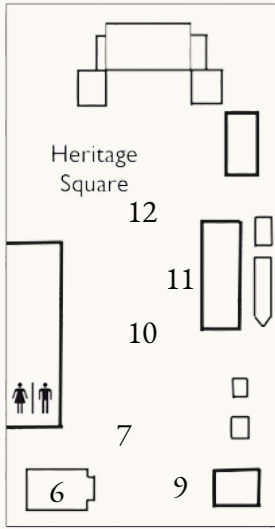
120 E. Mill St., Lindsborg

785-227-3595

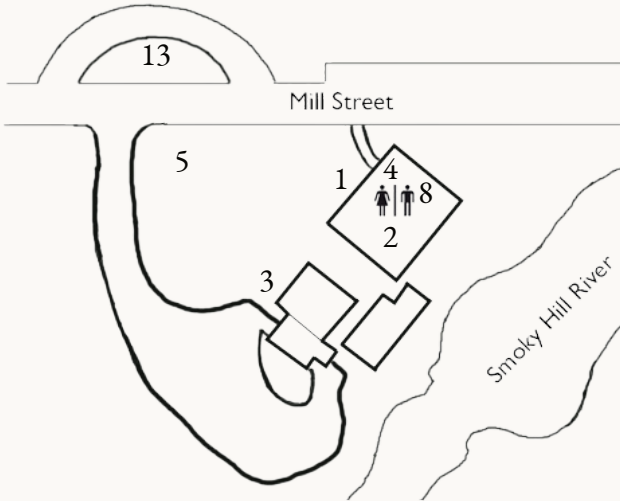
www.oldmillmuseum.org



- Tours of the Old Mill machinery in operation (\$10/person) •
- All other museum attractions and festival events: By Donation •
- Entertainment, artwork, great food, games, & demonstrations •



- 1) **Museum Front Porch** - Musical entertainment (11 a.m. - 3 p.m.) →
- 2) **Quilt Show** (main gallery) by McPherson Quilt Guild.
- 3) **Mill tours** - Guided tours of the running Old Mill ongoing 9 a.m. - 4:45 p.m. for \$10 per person. **Must be age 13 or older for safety. The mill will stop running at 4:45 p.m. and tours will be available for families with children ages 12 and younger.** *All other regular museum attractions are by-donation today!* While waiting for your tour to start, learn about a **career in milling** from our partners at K-State!
- 4) **Museum Gift Shop** - T-shirts, snacks (including ice cream!), handmade arts and crafts, toys, souvenirs, books and more!
The Gift Shop is also the place to purchase wristbands for **axe throwing** (location 13) and to bid on our **silent auction items** (just inside the museum main gallery).



- 5) **Food Truck Concessions** - Select from **Paradise Eats** (burgers, street tacos, & sandwiches) and **Kim's Express Foods** (gumbo, tamales, eggrolls, & Asian fusion).
- 6) **Dala Horse Decoration** - FREE activity in schoolhouse: 10 a.m. - close (while supplies last).
- 7) **Yard Games** - Hoop-and-stick races, **Kubb** and more on Heritage Square.
- 8) **Special Mini Exhibition** - "Skeleton-Of-Dog": Selected Geology & Natural History Artifacts from the Bethany College Collection Archive. →
- 9) **Blacksmithing Demo & Items** by Josh Womeldorf.
- 10) **Heritage Square Vendors, Tables & Demos** - Art Prints by Acacia Pracht; **Basketweaving** by Janie

Tubbs; **Chainmail Jewelry & Decorations** by The Metalbender (Amethyst Sankey); **Drawings** by Pam Peticio; **Goat Milk Soap & Lotion** by Wind River Farms (Angela Price); **Greenwood Spoon & Bowl Carving** by Jerry & Ruperta Hammerton; **The Land Institute**; **Leather Tool & Phone Holsters** by Farm Tough Leatherworks (Tim Rankin); **Origami Models and Jewelry** by Eian Pracht; **Photography** by Steve Pierce; **Plasma-Cut Decorative Saws** by Mike & Bonnie Becker; **Ropemaking** by Dean Gripe; **Weaving** by Carol Goering.

11) **"Ask A Question of Area History!"** - By the Smoky Valley Historical Association - *Ask a local history question! If association researchers don't already know the answer, they will work to connect you with an answer later.*

12) **Maypole** - Lindsborg *Folksdanslag*. Watch or participate in **traditional Swedish dance** at 11 a.m. and 3 p.m.!

13) **NEW! Oak & Iron Lanes axe throwing** - Running from **noon - 3 p.m.**, purchase a \$5 wristband at the Gift Shop (location 4) for unlimited times through the line!



Millfest Musical Entertainment

785-227-3595

Museum Front Porch

11 a.m. & 2 p.m. - **Front Porch Pickers**

12 p.m. - **Old Man Lingonberry**

1 p.m. & 3 p.m. - **Bethany Goes to Broadway**



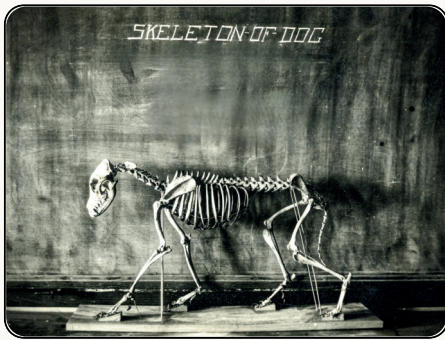
Lindsborg Old Mill
& Swedish Heritage Museum

Support the Museum in Silent Auction!

Remember to visit the museum building main gallery today to bid on exciting items donated to support the Lindsborg Museum.

Bidding closes at 4 p.m.

As of time of printing, we have 10 items in the auction and expect MORE to arrive today. Items to bid on include: Myra Backpack, aviator sunglasses, & sunflower bucket hat (Collections & Essentials); Doll's Swedish dress (Smoky Valley Arts & Folklife Center); Handwoven basket (Janie Tubbs); Paper crane earrings (Eian Pracht); Art print cards (Acacia Pracht); scarf (Amber Pracht), and two tickets each to Flatland Cavalry, Richie Furay, & Punch Brothers (Stiefel Theatre)



The museum has been entrusted with the contents of the former Bethany College Museum, but these rare geological and natural history artifacts haven't been seen publicly in decades. Now, thanks to the efforts of dozens of volunteers, we are able to present a selection of these intriguing treasures in "*Skeleton-Of-Dog*" ... a limited-run mini exhibition.

We invite you to see it now in the main museum gallery.

Sponsorship for Millfest 2024 includes:

Collections and Essentials, Lindsborg

Farm Bureau Financial Services - VanDonge & Associates, Lindsborg

Good Shepherd Turkey Ranch, Lindsborg

Great Plains Manufacturing, Salina

Indigo Moo'd Homemade Ice Cream, Lindsborg

Lindsborg Senior Center, Lindsborg

Raymer Society/Red Barn Museum, Lindsborg

Smoky Valley Arts and Folklife Center, Lindsborg

Trollslända Toy Store, Lindsborg



CRUST & CRUMB CO.
locally grown, naturally leavened

Newton, Kansas



Kansas State University,
Manhattan

We also want to thank all of our wonderful volunteers, with special thanks to our millers, Kansas State University Department of Grain Science and Industry, and our Old Mill tour guides!

2024 Millfest Sponsors: Thank you!



A Fundraising Coaching, Training and Consulting Company

CKA Consulting, Topeka



Farmers State Bank, Lindsborg



CHS Refinery, McPherson



Insuring Rural America Since 1888

Farmers Alliance, Lindsborg



www.hemslojd.com

Hemslojd - arts, crafts, & gifts, Lindsborg



Lindsborg Family Dental Care, Lindsborg



Casey's General Store, Lindsborg



Swede Self Storage, Lindsborg

More sponsors listed inside.



KANSAS WHEAT®

Rediscover Wheat

Kansas Wheat Commission, Manhattan



Dröm Sött Inn, Lindsborg



Marquette Farmers State Bank

Marquette Farmers State Bank, Marquette



Small World Gallery - art & gifts, Lindsborg



Alliance Agency, Inc.

AUTO • HOME • RENTERS • FARM • BUSINESS • LIFE

Alliance Agency Insurance, McPherson



Lindsborg Lions Club, Lindsborg



White's Foodliner, Lindsborg



Sam's Club, Salina



Ehmke Seed, Healy, KS



First Bank Kansas, Lindsborg



The Bank of Tescott, Lindsborg



Dauer Welding & Machine, Lindsborg



Skandia Hem Realty, Lindsborg



VIKING MOTEL

Viking Motel, Lindsborg

Peoples Bank and Trust



Peoples Bank and Trust, Lindsborg



The Stiefel Theatre, Salina